

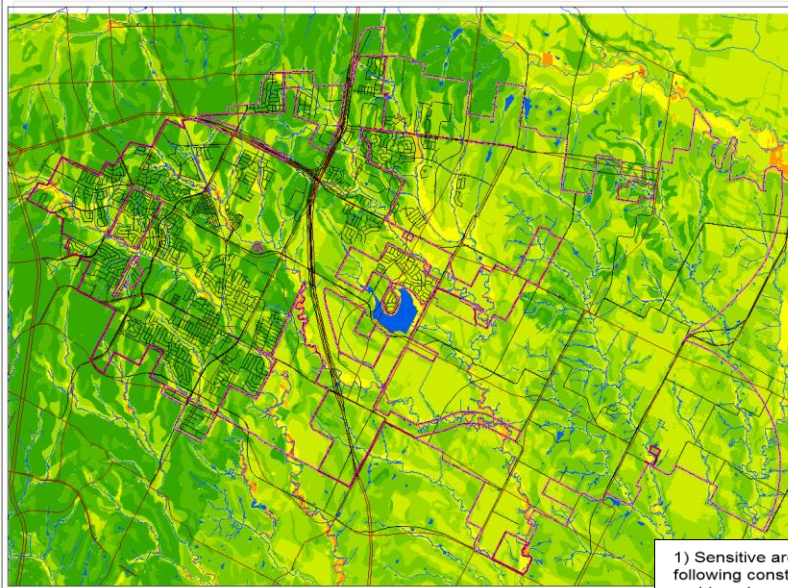


consulting, inc.

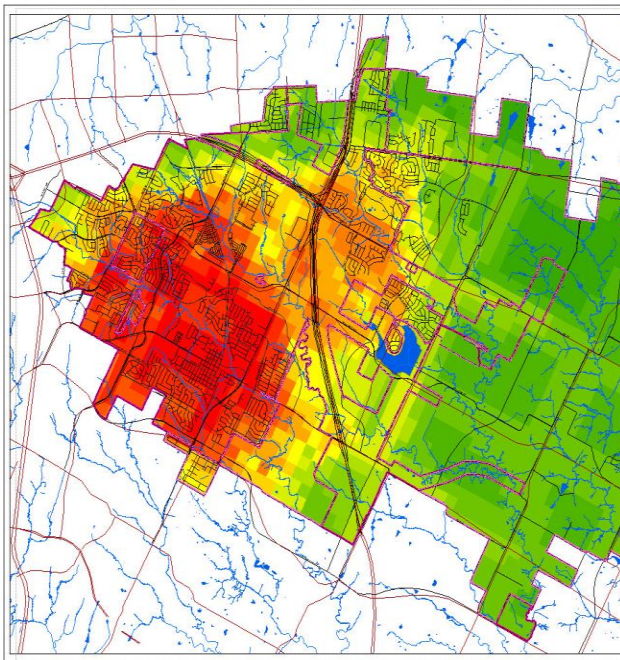
community planning | landscape architecture | training

# Land Analysis for Pflugerville CASE STUDY

## Survey Results from Public Meeting #1 become Land Analysis Mapping for Chip Game



### Sensitive Lands



### Growth Efficiency

1) Sensitive area where intensive development might not be appropriate could include the following constraints: (score each factor for how you perceive the importance of these problem, hazard and resource lands) 5 = most important, 1 = least important

Floodways (high frequency)	5	4	3	2	1
Creeks, drainages & lakes	5	4	3	2	1
Rare & threatened species (eagle, peregrine etc)	5	4	3	2	1
Rare habitat - riparian areas (floodway vegetation)	5	4	3	2	1
Important Habitat (Herons, Pelican, Geese, Deer, Turkey)	5	4	3	2	1
Irrigated Agriculture	5	4	3	2	1
Prime Agricultural Soils	5	4	3	2	1
Wet Soils (hydric) shallow to water	5	4	3	2	1
Steep slopes	5	4	3	2	1
Poor septic suitability	5	4	3	2	1
Public Lands	5	4	3	2	1
Poor dwelling suitability	5	4	3	2	1
Oil and Gas Development	5	4	3	2	1
Wetlands	5	4	3	2	1
Geologic Faults	5	4	3	2	1
others?	5	4	3	2	1

The best  
places for  
future  
growth is  
where  
sensitivity is  
low &  
efficiency  
high

2) Which of the following factors that affect the efficiency of future growth do you think are most important to new development? (5 = Most Important, 1 = Least Importance):

Proximity to paved roads	5	4	3	2	1
In or near public sewer services	5	4	3	2	1
In or near public water services	5	4	3	2	1
Parks and recreation opportunities near	5	4	3	2	1
Quick response for police	5	4	3	2	1
Quick response for fire services	5	4	3	2	1
Near existing elementary school	5	4	3	2	1
Near existing high school	5	4	3	2	1
Near existing middle school	5	4	3	2	1
Near highway (quicker response)	5	4	3	2	1
Near Library, City Hall or Community Center	5	4	3	2	1
Proximity to Airport	5	4	3	2	1
Near Post Office	5	4	3	2	1
Near Hospital	5	4	3	2	1
Near College (post high school)	5	4	3	2	1
other factors?	5	4	3	2	1